

ORDINANCE NO. 2035

AN ORDINANCE AMENDING ORDINANCE NO. 1000 OF THE CITY OF REDLANDS BY ADOPTING AN ADDITIONAL LAND USE DISTRICT MAP AS PART OF THE OFFICIAL LAND USE ZONING MAP AND EFFECTING ZONE CHANGE NO. 319
R.P.C. NO. 720

THE CITY COUNCIL OF THE CITY OF REDLANDS does ordain:

SECTION 1. Public hearings having been held before the Planning Commission of the City of Redlands and the City Council of the City of Redlands pursuant to California Conservation and Planning Act and Ordinance No. 1000 of the City of Redlands, the Zone District as shown on Land Use District Map entitled "City of Redlands Zoning Map," Supplement Map No. 319 attached hereto, is hereby approved, and said Map is hereby adopted as a part of the Official Land Use Zone Map as provided in Section 9 of Ordinance No. 1000 and on file in the Office of the Planning Commission of the City of Redlands.

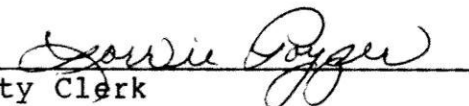
SECTION 2. This ordinance establishes a change of zone from R-1-20,000 District to R-A (Residential Estate) District for approximately 3.3 acres of property located on the north side of Sunset Drive (111 East Sunset Drive South), approximately 600 feet east of Edgemont Drive. Said change of zone to R-A (Residential Estate) District would be in conformity with the General Plan.

SECTION 3. Effective Date: This ordinance shall be in force and take effect upon approval of Annexation No. 68.

SECTION 4. The City Clerk shall certify to the adoption of this ordinance and cause the same to be published once in the Redlands Daily Facts, a newspaper of general circulation printed and published in this City.


ATTEST:


Mayor of the City of Redlands


City Clerk

I, Lorraine Poyzer, City Clerk, City of Redlands, hereby certify that the foregoing ordinance was duly adopted by the City Council at a regular meeting thereof held on the 5th day of July, 1988, by the following vote:

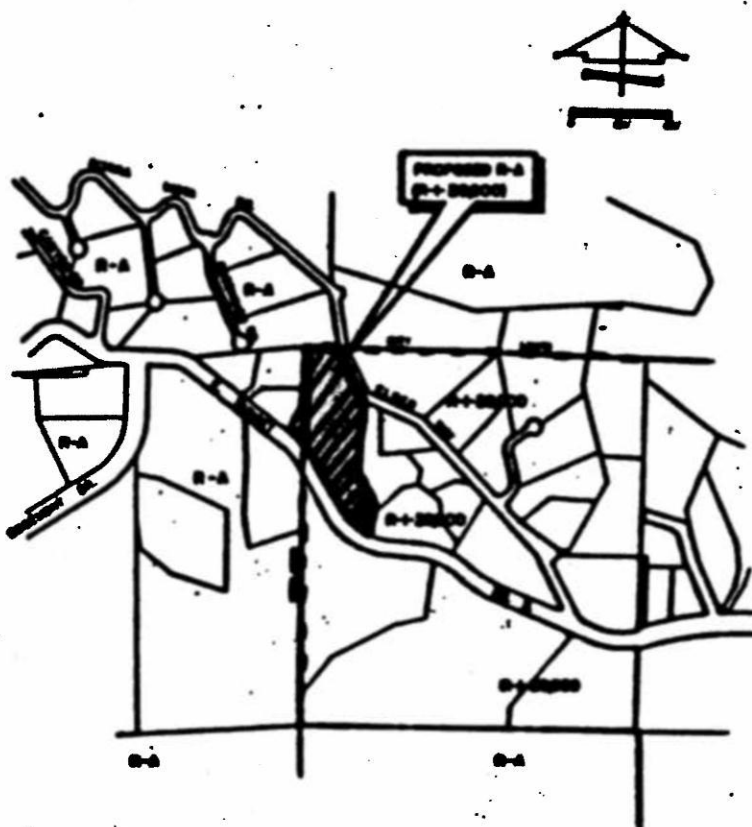
AYES: Councilmembers Wormser, Johnson, Cunningham;
Mayor Beswick
NOES: None
ABSENT: Councilmember DeMirjyn


City Clerk

Z.C. 31
Amended

CITY OF REDLANDS
PLANNING DEPARTMENT
SUPPLEMENTAL MAP NO. 219

ZONING MAP FOR
ANNEXATION NO. 68
ORDINANCE NO.



REDLANDS PLANNING COMMISSION

ENV. 020